



UNIVERSE

PLASTIC MOULDS AZA1125

The AZA1125 One-Piece Plastic Cube Mould is a next-generation alternative to conventional metal cube moulds, engineered for casting 150 mm concrete cube specimens used in compressive strength testing.

Manufactured from high-strength, non-deformable engineering plastic, this mould offers exceptional durability, dimensional accuracy, and ease of use, making it ideal for laboratories, construction sites, and mobile testing environments.

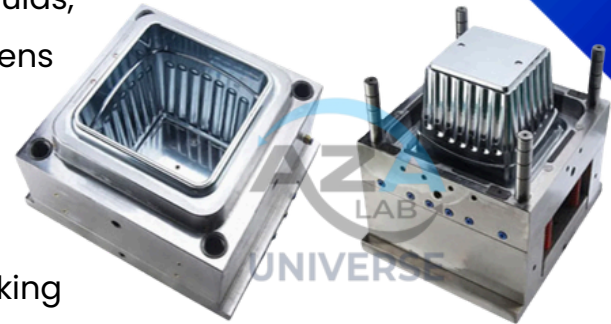
Its seamless single-piece construction eliminates the need for bolts, clamps, or assembly, significantly improving operational efficiency and reducing handling time.

Key Features

- One-Piece Design – No bolts, screws, or external frames
- Lightweight Construction – Approx. 90% lighter than metal moulds
- High-Strength Plastic – Resistant to deformation, impact, and vibration
- Fast Demoulding System – Cube ejected using compressed air or water pressure
- Non-Stick Internal Surface – Smooth finish for easy release
- Corrosion-Free – Ideal for humid and aggressive environments
- Reusable & Low Maintenance – Suitable for multiple test cycles
- Eco-Friendly Manufacturing – Non-toxic and recyclable material

Standards Compliance

- IS 516 – Concrete strength testing
- ASTM C109 – Compressive strength of cement mortar cubes
- BS EN 12390 – Testing hardened concrete





UNIVERSE

TECHNICAL SPECIFICATIONS

Feature	Specification
Model	AZA1125
Product Type	One-Piece Plastic Cube Mould
Cube Size	150 mm
Material	High-strength engineering plastic
Construction	Single-piece seamless design
Demoulding Method	Compressed air / water pressure
Surface Finish	Smooth, non-stick
Weight	Approx. 1/10th of metal moulds
Reusability	Yes
Compliance	IS 516, ASTM C109, BS EN 12390

UNIVERSE