



**UNIVERSE**

## **PRISM MOULD THREE GANG AZA0803**

The AZA0803 Prism Mould (Three Gang) is a precision-engineered laboratory mould designed for casting three cement mortar prism specimens simultaneously. Each cavity is manufactured to exact dimensions of 40 mm × 40 mm × 160 mm, complying with international testing standards.

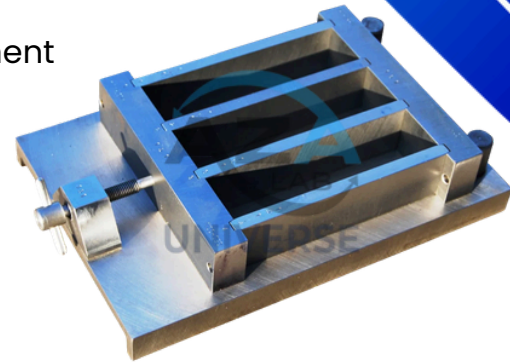
This mould is widely used for preparing specimens for compressive strength and flexural strength testing of cement mortar, ensuring high accuracy, repeatability, and consistency in laboratory results.

### **Key Features**

- Cement and mortar strength testing
- Quality control in construction laboratories
- Cement manufacturing QA/QC processes
- Infrastructure and site laboratory testing
- Academic and research institutions
- Material certification and compliance testing

### **Working Principle**

- Assemble mould with end plates securely tightened.
- Apply light oil to internal surfaces before casting.
- Fill mortar in layers and compact using a jolting apparatus.
- Level the surface and allow curing as per standards.
- De-mould carefully after the specified curing period.





**UNIVERSE**

### **Standards & Compliance**

- IS 10080
- IS 4031
- EN 196-1

### **Product Features & Benefits**

- Three-Gang Design

Enables simultaneous casting of three specimens, improving efficiency.

- Precision Machining

Ensures dimensional accuracy and uniform specimen preparation.

- Robust Construction

Made from high-quality cast iron for durability and long service life.

- Smooth Internal Finish

Facilitates easy de-moulding and reduces specimen damage.

- Removable End Plates

Simplifies cleaning, maintenance, and reassembly.

- Leak-Proof Design

Tight clamping prevents slurry leakage during casting.

- Jolting Machine Compatibility

Designed for seamless integration with standard jolting apparatus.

- Reusable & Cost-Effective

Suitable for repeated use in demanding lab environments.



## TECHNICAL SPECIFICATION

Parameter	Details
Model	AZA0803
Type	Three Gang Prism Mould
Cavity Size	40 mm × 40 mm × 160 mm (per cavity)
Number of Cavities	3
Material	Cast Iron (Machined Finish)
Surface Finish	Smooth internal surface (anti-stick)
End Plates	Removable (Brass/Steel screws)
Assembly	Leak-proof with clamping bolts
Weight	Approx. 9 – 12 kg
Compatibility	Jolting Apparatus (IS 10080 compliant)
Recommended Equipment	AZA0807 Jolting Apparatus