



UNIVERSE ADVANCED SERVO COMPRESSION TESTING MACHINE AZA1333

The AZA1333 Advanced Servo Compression Testing Machine is a high-precision, fully automated servo-controlled compression testing system designed for accurate determination of the compressive strength of concrete, cement products, construction materials, and structural specimens. Engineered for reliability, accuracy, and operator safety, the AZA1333 is suitable for testing:

- Concrete cubes
- Concrete cylinders
- Paver blocks
- Interlocking tiles
- Rocks and construction materials

The machine incorporates advanced servo-hydraulic control technology, automatic pace rate regulation, and intelligent digital monitoring to ensure highly accurate and repeatable test results.

Featuring a 7-inch LCD touch-screen interface, real-time graphical monitoring, onboard reporting, and advanced safety systems, the AZA1333 is ideal for:

- Construction material testing laboratories
- Civil engineering laboratories
- Quality control facilities
- Infrastructure testing centers
- Research and educational institutions





UNIVERSE TECHNICAL SPECIFICATIONS

Parameter	25 Ton	50 Ton	100 Ton	200 Ton	300 Ton
Horizontal Clearance (mm)	210	210	240	310	380
Vertical Day Light (mm)	310	310	310	310	310
Height of Load Frame (mm)	670	670	750	890	990
Approx. Weight (kg)	210	260	330	580	950
Cube Specimen (mm)	50, 70.6	50, 70.6	100, 150	100, 150	100, 150
Cylinder Specimen (mm)	100×200, 150×300	100×200, 150×300	100×200, 150×300	100×200, 150×300	100×200, 150×300

UNIVERSE



UNIVERSE TECHNICAL SPECIFICATIONS

Parameter	25 Ton	50 Ton	100 Ton	200 Ton	300 Ton
Horizontal Clearance (mm)	210	210	240	310	380
Vertical Day Light (mm)	310	310	310	310	310
Height of Load Frame (mm)	670	670	750	890	990
Approx. Weight (kg)	210	260	330	580	950
Cube Specimen (mm)	50, 70.6	50, 70.6	100, 150	100, 150	100, 150
Cylinder Specimen (mm)	100×200, 150×300	100×200, 150×300	100×200, 150×300	100×200, 150×300	100×200, 150×300

UNIVERSE



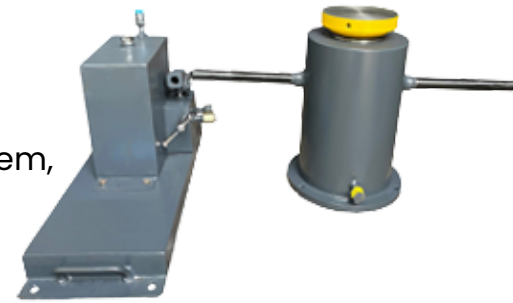
UNIVERSE

SINGLE ACTION HYDRAULIC JACK

The AZA1335 Single Action Hydraulic Jack is a compact, rugged, and high-performance hydraulic loading system designed for multipurpose applications in civil engineering, structural testing, construction, and geotechnical investigations.

The unit is engineered to provide accurate and controlled load application for a wide range of field and laboratory testing requirements.

Supplied complete with a manually operated pumping system, high-pressure hose, and precision bourdon-type pressure gauge, the AZA1335 ensures reliable operation even under demanding site conditions.



Its robust steel construction, long piston travel, and factory-calibrated hydraulic system make it ideal for:

- Field load testing
- Structural loading applications
- Pile load testing
- Prestressing operations
- Deformation and displacement studies

The AZA1335 is suitable for both laboratory and on-site applications where portable and dependable hydraulic load application is required.



UNIVERSE

Technical Specifications

Parameter	25 Ton	50 Ton	100 Ton
Capacity	25 Ton	50 Ton	100 Ton
Ram Diameter (mm)	82	116	165
Ram Travel (mm)	150	150	150
Pressure Gauge	8"	8"	8"
Least Count (kN)	1	2	5
Maximum Pressure (kg/cm ²)	480	480	480
Height of Jack – Closed (mm)	320	330	330

UNIVERSE